

# Installation with tiny image

---

The tool to install Mageia with remote repositories



The texts and screenshots in this manual are available under the CC BY-SA 3.0 license <http://creativecommons.org/licenses/by-sa/3.0/>.

This manual was produced with the help of the [Calenco CMS](http://www.calenco.com) [http://www.calenco.com] developed by [NeoDoc](http://www.neodoc.biz) [http://www.neodoc.biz].

It was written by volunteers in their free time. Please contact [Documentation Team](https://wiki.mageia.org/en/Documentation_team) [https://wiki.mageia.org/en/Documentation\_team], if you would like to help improve this manual.

## **Installation with tiny image**

## Tartalom

.....	1
1. Kicsi boot képmás telepítése .....	1
1.1. Összegzés .....	1
1.2. Mielőtt elkezdni .....	1
1.3. Telepítés .....	1
1.4. Installing - Stage 2 .....	10

---

# 1. Kicsi boot képmás telepítése

## 1.1. Összegzés

Mageia-< version>-netinstall-< arch> .iso (korábbi nevén boot.iso) egy kis képmás, amely nem tartalmaz többet, mint ami ahhoz szükséges hogy elinduljon maga a telepítő.

- **online forrás** (vagy helyi tükör)
- Az ISO képmás helye **merevlemez** vagy **USB stick**
- Az ISO képmás a **CD/DVD ROM-on**
- Az ISO képmás a helyi **lan** hálózaton

folytatás és a telepítés befejezése.

## 1.2. Mielőtt elkezd

A Mageia-<verzió> -netinstall-nonfree-<arch> .iso (korábbi néven boot-nonfree.iso) további védett eszközmeghajtókat, tartalmaz melyek szükségesek lehetnek a hálózati eszközökhöz, lemezvezérlőhöz vagy más egyéb eszközökhöz.



The Mageia-<version>-netinstall-nonfree-<arch>.iso and Mageia-<version>-netinstall-<arch>.iso files can be used to launch a network install over a wired or wifi unencrypted network. (Encrypted wifi or bluetooth not allowed)

---



Ellenben, ha a telepítés DVD vagy LiveCD-ről történik, az első részben a telepítés **első szakaszában** kérni fogja, hogy írja a be a dolgokat. Ebben a szakaszban a billentyűzet [USA kiosztást tartalmaz](https://en.wikipedia.org/wiki/Keyboard_layout#United_States) [https://en.wikipedia.org/wiki/Keyboard\_layout#United\_States]. Ez nagyon zavaró lehet ha neveket és útvonalakat kell megadni a saját nyelvén.

---

You can find the Mageia-<version>-netinstall-nonfree-<arch>.iso and Mageia-<version>-netinstall-<arch>.iso [here](https://www.mageia.org/en/downloads/) [https://www.mageia.org/en/downloads/]. It is called Network Installation.

You can also download these images from whatever mirror you want in this list <http://mirrors.mageia.org/>. Just follow the path /distrib//cauldron/\$ARCH/install/images/ where \$ARCH is i586 or x86\_64.

After downloading the image, burn it on a CD/DVD or, if you prefer to put it on a USB stick, follow the instructions [here](https://wiki.mageia.org/en/Installation_Media#Dump_Mageia_ISOs_on_an_USB_stick) [https://wiki.mageia.org/en/Installation\_Media#Dump\_Mageia\_ISOs\_on\_an\_USB\_stick].

## 1.3. Telepítés

This step is also called Stage 1

### 1.3.1. Your computer boots in BIOS mode (also called MBR for Master Boot Record)

The first screen to appear is this one

```

Welcome to Mageia install help

In most cases, the best way to get started is to simply press the <Enter> key.
If you experience problems with standard install, try one of the following
install types (type the highlighted text and press <Enter>):

o text for text installation instead of the graphical one.
o linux for standard graphical installation at normal resolution.
o linux vga=785 for low resolution graphical installation.

To repair an already installed system type rescue followed
by <Enter>.

You can also pass some <specific kernel options> to the Linux kernel.
For example, try linux noapic if your system has trouble operating
your network adapter correctly.
NOTE: You cannot pass options to modules (SCSI, ethernet card) or devices
such as CD-ROM drives in this way. If you need to do so, use noauto mode.

[F1-Help] [F2-Advanced Help]
boot: _
```

When booting up, you can choose to read the advanced help by pressing F2 and return to the installer screen with F1. If you don't choose one, the boot will continue with default settings.

### 1.3.2. Számítógép indítása UEFI módban

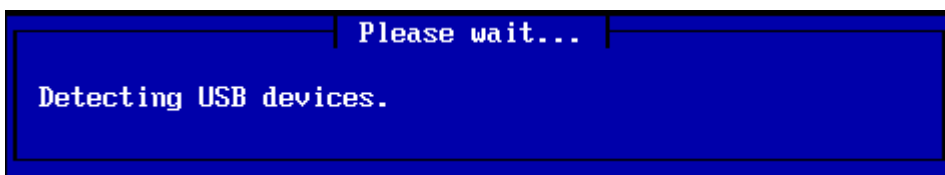
The first screen to appear is this one



Use the arrow keys to select Start Mageia n Install and press Enter.

### 1.3.3. In both modes

Then you can see this screen :



During Stage 1, nothing will be written to your Hard Disk, so it is safe at any point to quit. You can do so by pressing ctrl+alt+del.

You can use alt+F3 to read the logs and alt+F1 to return to the installer screen.

### 1.3.4. Choose the installation method

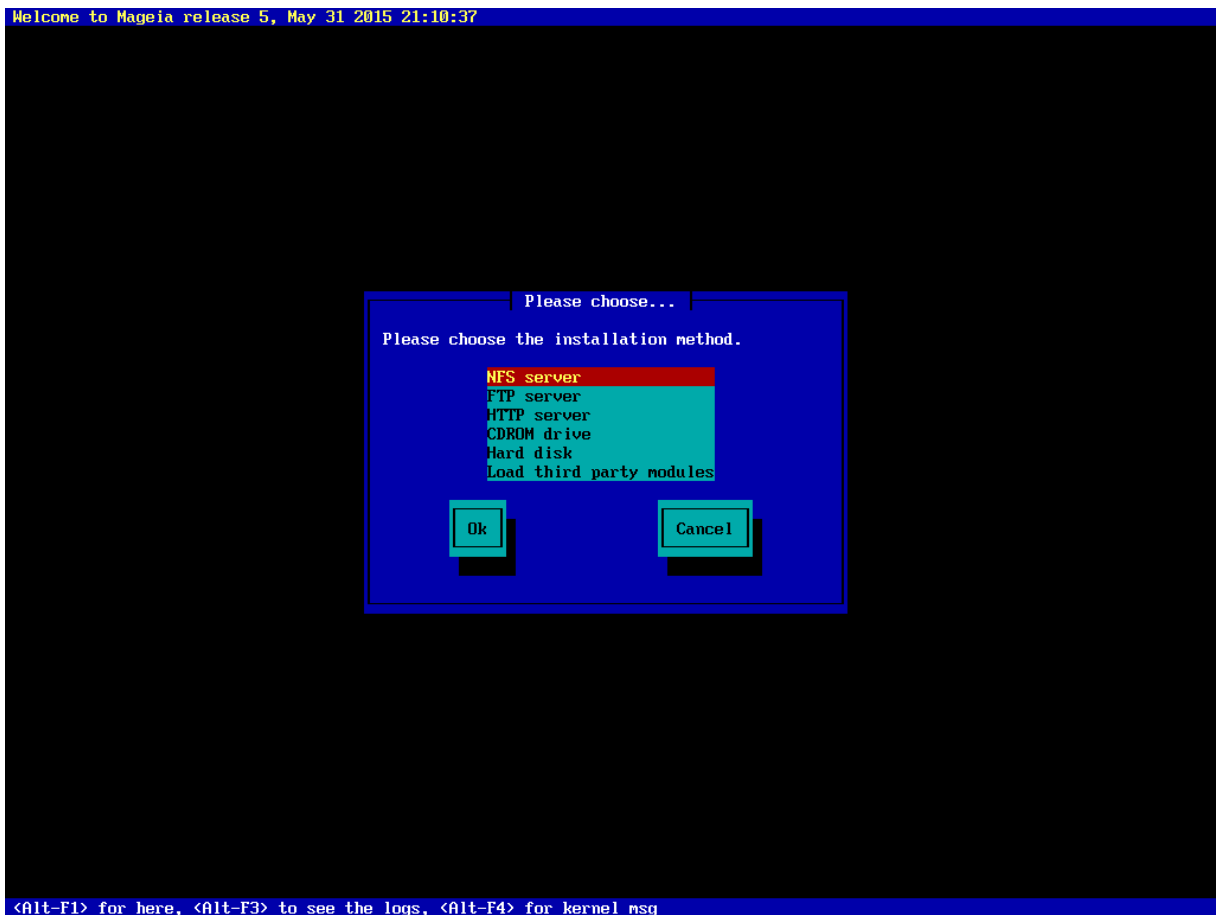
Use the arrow keys to move down and up the list, until your method of choice is highlighted.

If you don't know what to choose for a **Network Installation**, choose FTP server.

On an enterprise network, FTP and rsync may be blocked, so using **HTTP server** is a good choice in this case.

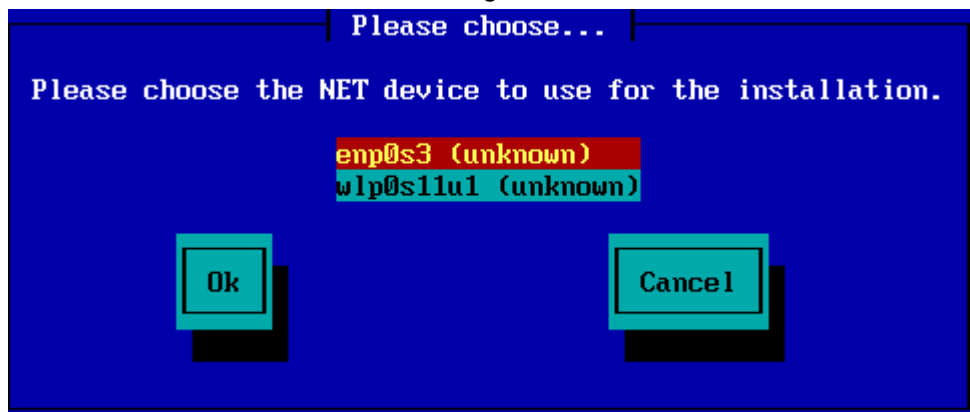
Press the tab key until Ok is highlighted and then press enter.

For an installation from hard disk or USB stick, see below.

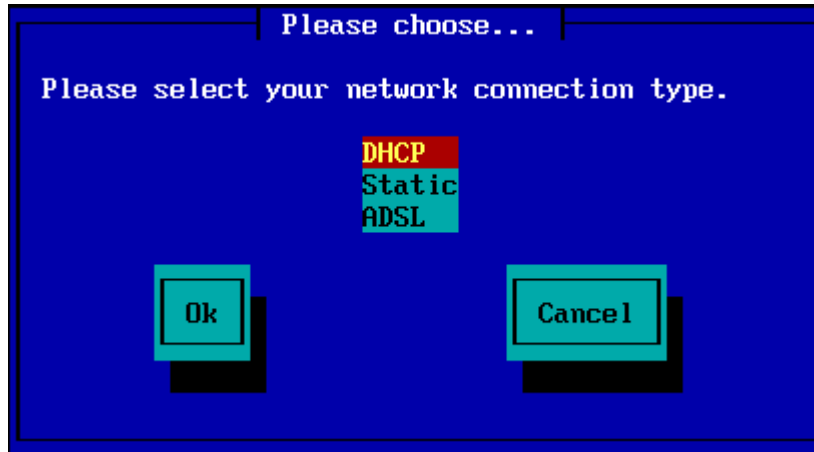


### 1.3.5. Selecting network connection type

If you have several network cards, choose the right one.

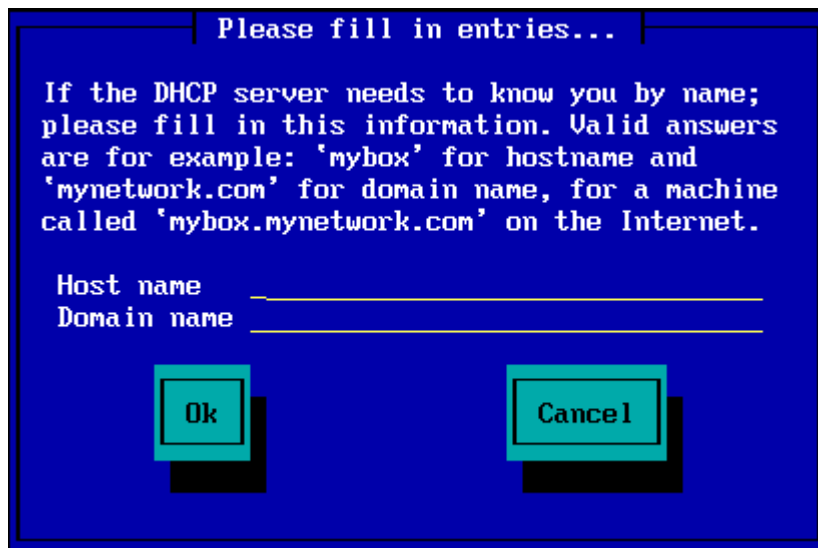


If you don't know what to choose, choose **DHCP**



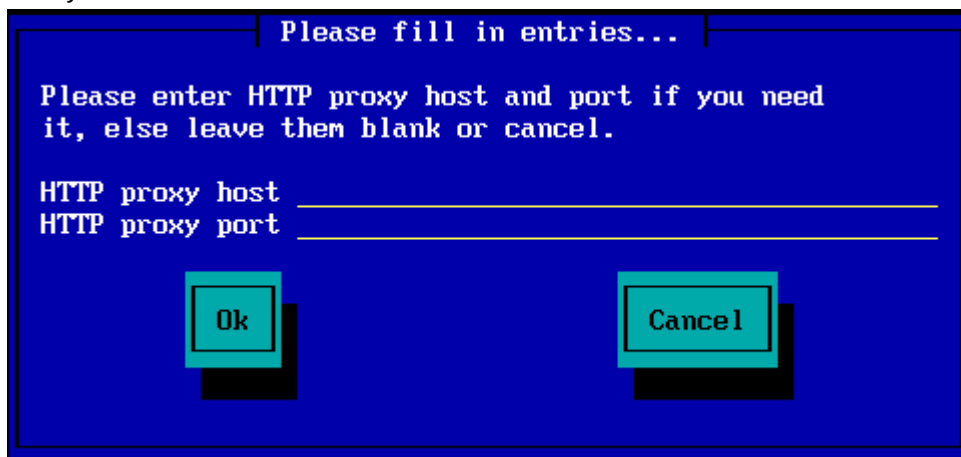
### 1.3.6. Setting host name and domain name

If you don't know what to do: leave it blank and select "Ok"



### 1.3.7. HTTP proxy

Leave blank if you don't know what to do

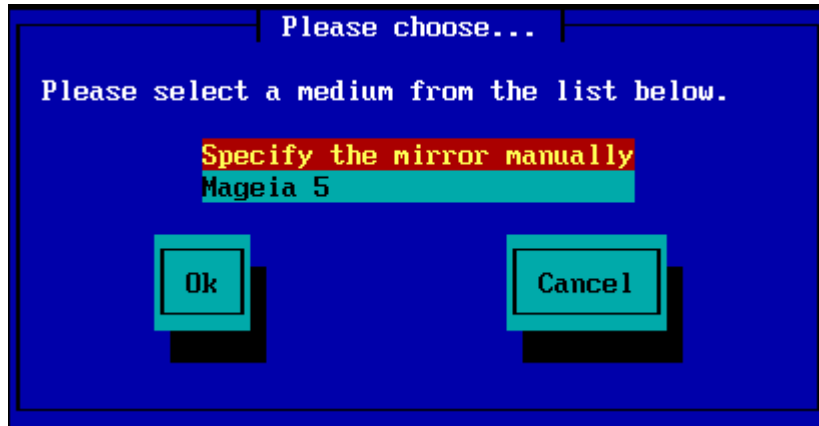




---

### 1.3.8. Select a medium

- If you choose to specify the mirror manually, you'll have to type the path to your preferred medium. This can be very hard if you don't have an American keyboard.
- Selecting the "Mageia" option will give you a list you can choose from by moving up and down with the arrow keys.



#### 1.3.8.1. Specify the mirror manually

Whichever server you choose, listed [here](http://mirrors.mageia.org/) [http://mirrors.mageia.org/], it should use the same tree-like structure from "mageia" (or "Mageia") as used by the official Mageia mirrors. That means .../mageia/distrib/<version>/<arch>

A correct entry (when using an official mirror) in the "Mageia directory" field below, could be:

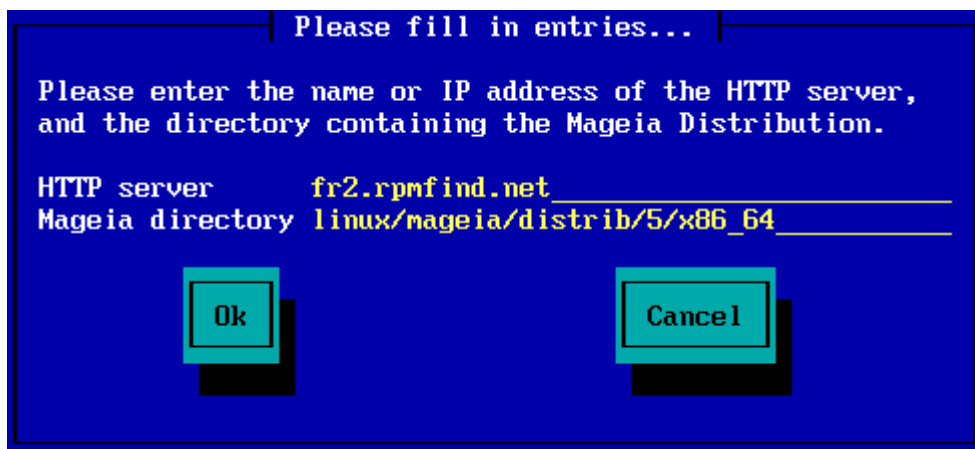
**pub/linux/mageia/distrib/cauldron/i586**

Another example for Mageia 5 x86\_64 would be:

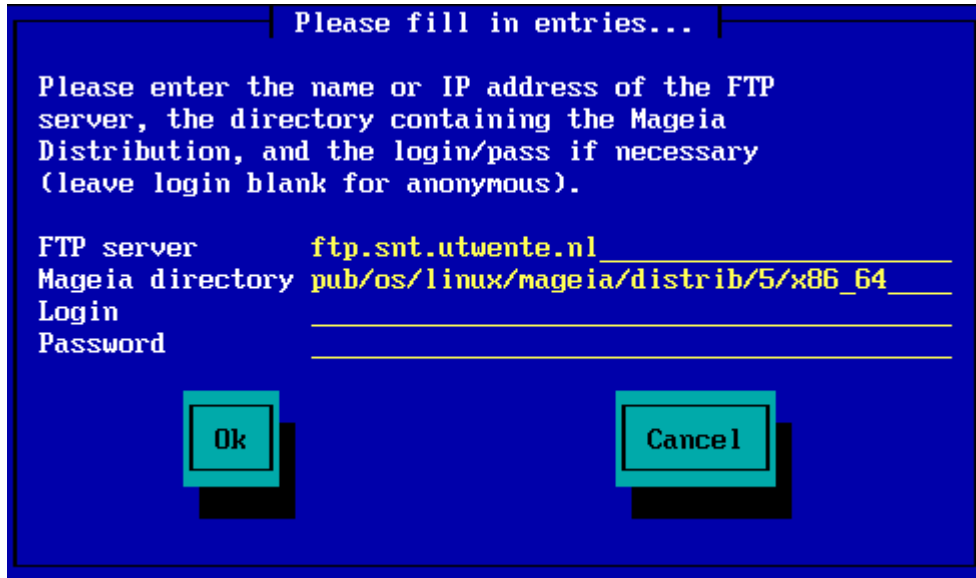
**pub/Mirrors/Mageia/distrib/5/x86\_64.**

Other mirrors may have a different structure and the screenshots below show such examples:

If you chose a HTTP server:

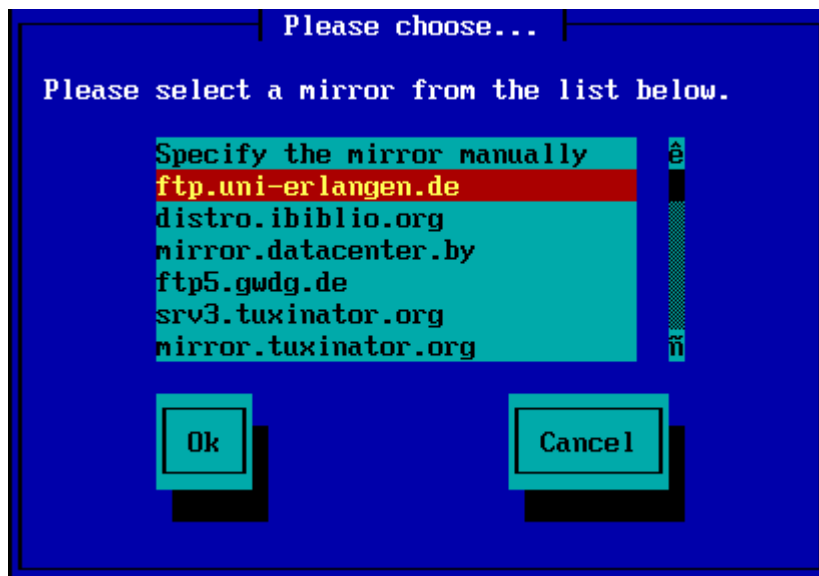


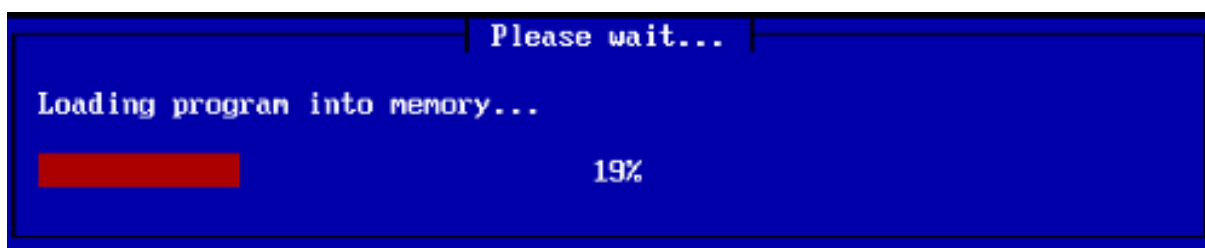
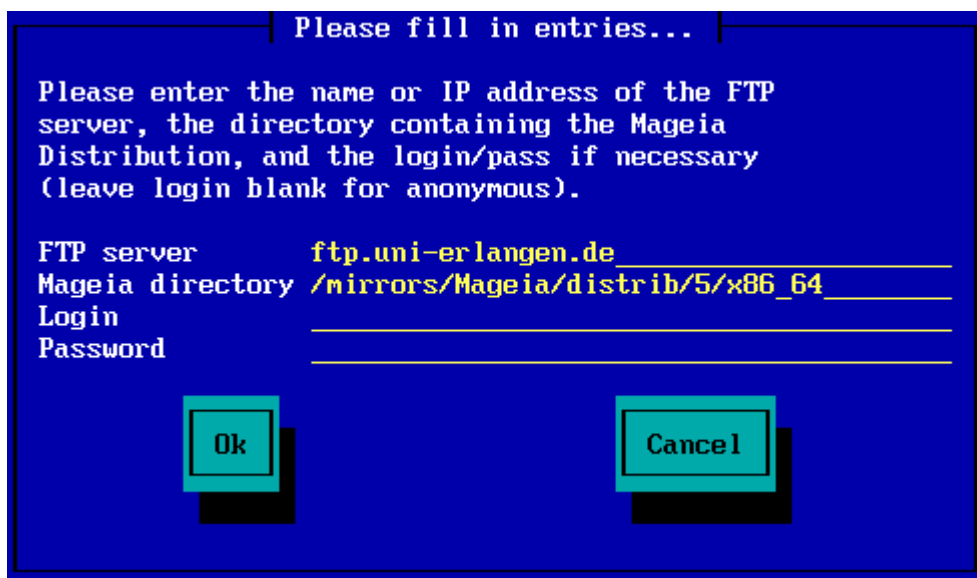
If you chose a FTP server:



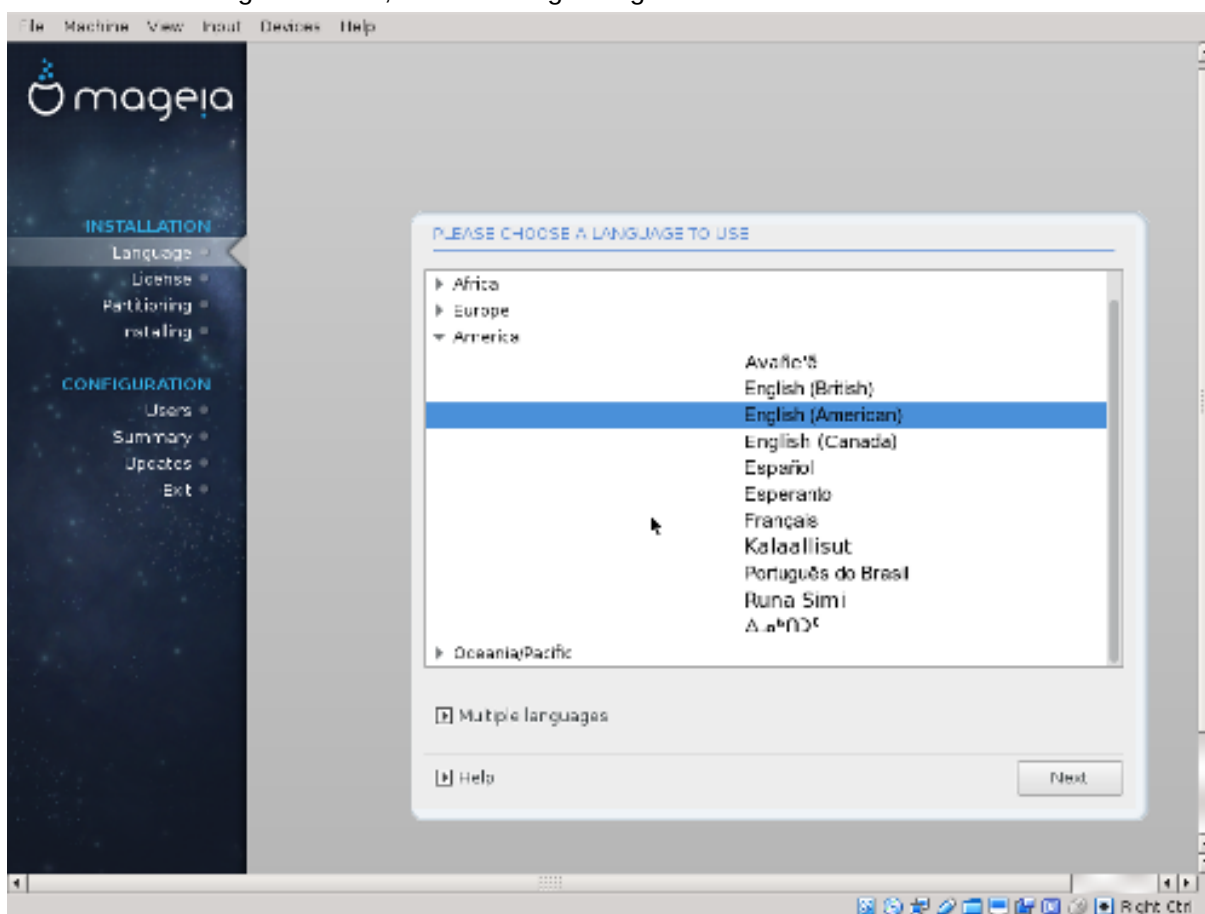
### 1.3.8.2. Mageia n (selecting a mirror from the list)

- If you get a lot of missing dependency errors later in the install, reboot and try a different mirror.
- After choosing an FTP server, you get a screen where you can add a login name and password if required.
- After this step, **Stage 2** will be installed and started



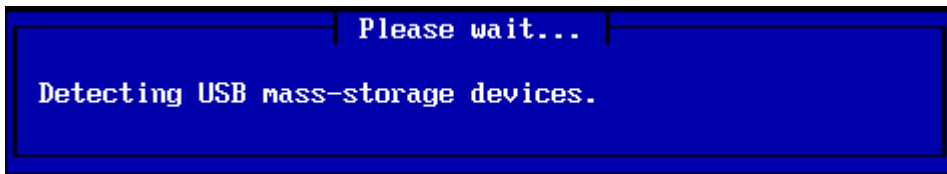


This is the first Stage 2 screen, see Installing - Stage 2 below:



---

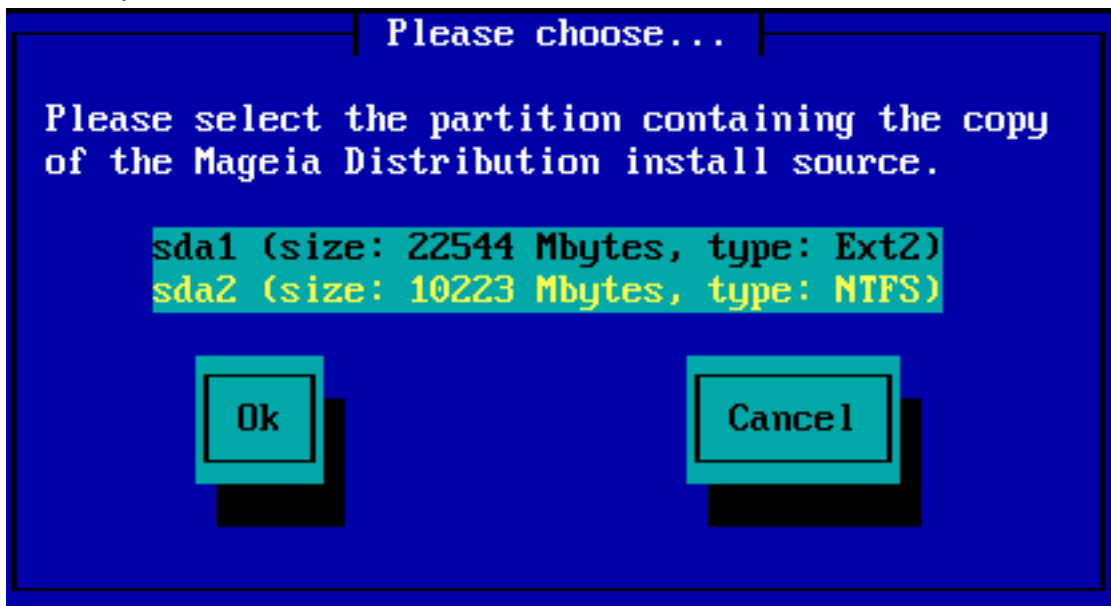
### 1.3.9. Installation from Hard disk



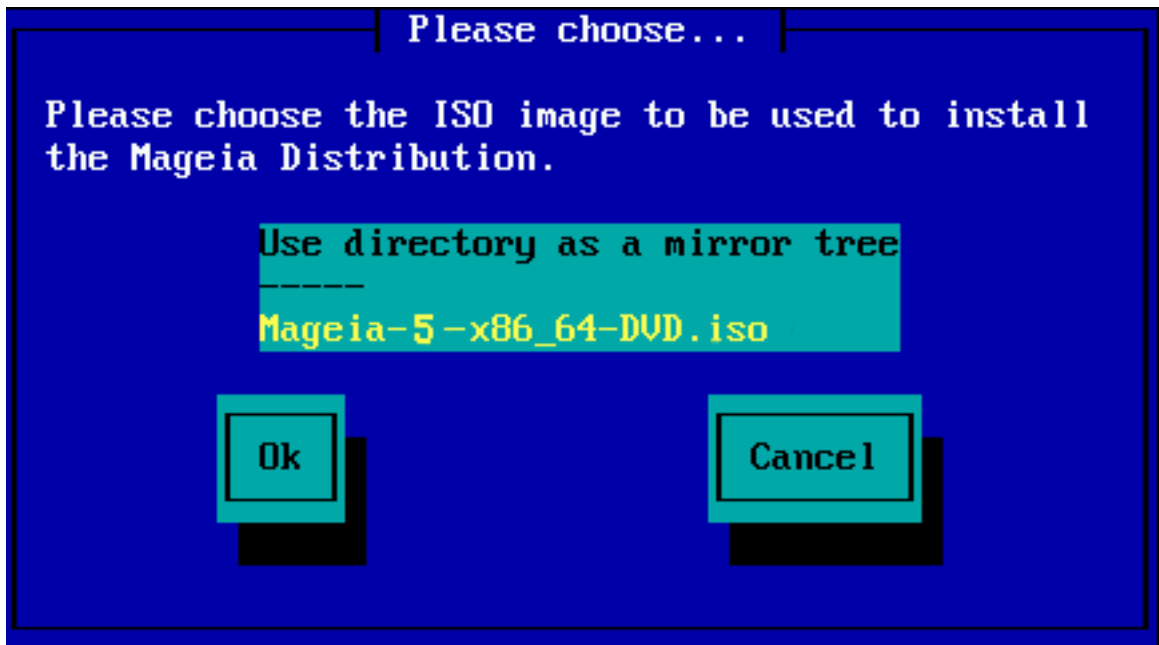
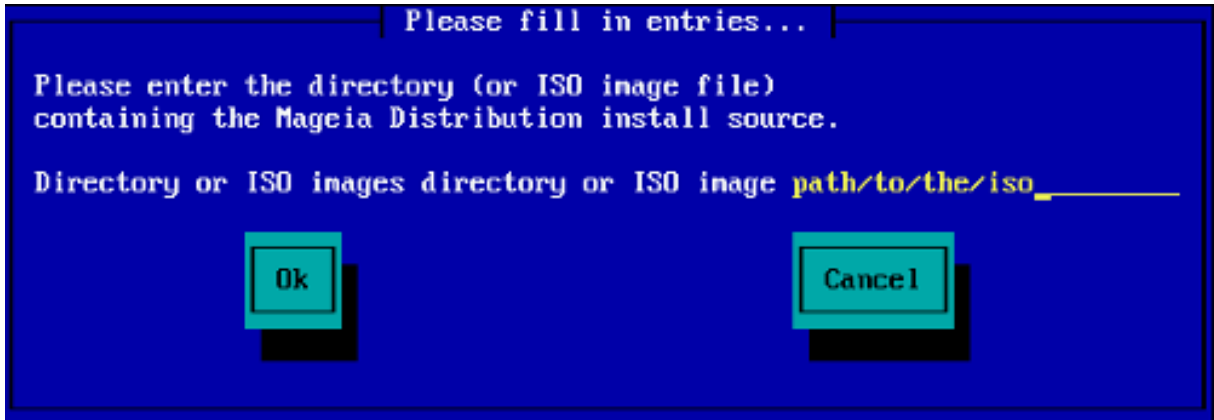
If you choose to install from hard disk or USB stick, you must know where the iso file is saved. First, select your hard drive (or USB stick)



and then the partition



Then specify the directory or the file name of the iso. Leaving open or using the directory is easier, because the installer then offers you a list of directories and files, from which you can select with up and down arrows, as seen by the second image.



#### 1.4. Installing - Stage 2

- The first screen you see now, is the "Please choose a language to use" screen. Nothing has been written to your HD yet. If you want to reboot, go to tty2 with ctrl+alt+F2 and press ctrl+alt+del. (ctrl+alt+F7 to come back if you change your mind).
- This part of the install is the same as shown in <http://doc.mageia.org/installer/5/en/content/selectLanguage.html>. Please click the link to continue reading and change the "5" in the URL to the version you are installing.